

ASKO | DISHWASHER COMPARISON



Pocket Handle



Pro Handle



Tubular Handle



T-Bar Handle



Panel Ready

40 SERIES

DBI364IS	Pocket Handle with Front Display	XL
DBI564IS	Pocket Handle	XL
DBI564ISSOF	Pocket Handle with Water Softener	XL
DBI564IXXLS	Pocket Handle	XXL
DBI564TS	T-Bar Handle	XL
DBI564THS	Tubular Handle	XL
DBI564PHS	Pro Handle	XL
DFI564	Panel Ready	XL
DFI564XXL	Panel Ready	XXL

FEATURES

- 16 Place Settings
- 42 dB(A) - - 40dB(A) with Night Mode
- 9 Spray Zones including 2 adjustable PowerZones™
- 8 Steel™ - designed to last for 20 years
- Aqua Safe™ - System ensures a leak-safe dishwasher
- Turbo Combi Drying™
- TouchProof™ Coating
- Premium 3-level Flexirack™ system with height-adjustable upper rack
- Status Light™

50 SERIES

DBI565IXXLS	Pocket Handle	XXL
DBI565TXXLS	T-Bar Handle	XXL
DBI565THXXLS	Tubular Handle	XXL
DBI565PHXXLS	Pro Handle	XXL
DFI565	Panel Ready	XL
DSD565	Panel Ready/Sliding Door	XL
DFI565XXL	Panel Ready	XXL
DFI565XXLSOF	Panel Ready with Water Softener	XXL

FEATURES

- 16 Place Settings
- **40 dB(A) - - 38dB(A)** with Night Mode
- 9 Spray Zones including 2 adjustable PowerZones™
- 8 Steel™ - designed to last for 20 years
- Aqua Safe™ - System ensures a leak-safe dishwasher
- **Sensor controlled** Turbo Combi Drying™
- TouchProof™ Coating
- **Exclusive** 3-level Flexirack™ system with height-adjustable upper rack
- Status Light™
- **2 LED Interior Lights**
- **Auto Program**
- **WiFi enabled with ConnectLife**

60 SERIES

DBI776IXXLSSOF	Pocket Handle	XXL
DFI776XXLSOF	Panel Ready	XXL

60+ SERIES

World's
Largest
Dishwasher
Capacity

DBI786IXXLSSOF	Pocket Handle	XXL
DFI786XXLSOF	Panel Ready	XXL

FEATURES

- **17 Place Settings**
- **39 dB(A) - - 37dB(A)** with Night Mode
- 9 Spray Zones including 2 adjustable PowerZones™
- 8 Steel™ - designed to last for 20 years
- Aqua Safe™ - System ensures a leak-safe dishwasher
- Sensor controlled Turbo Combi Drying™
- TouchProof™ Coating
- Exclusive 3-level Flexirack™ system with height-adjustable upper rack and **middle rack**
- Status Light™
- **4 LED Interior Lights**
- Auto Program
- WiFi enabled with ConnectLife
- **Water softener**
- **Auto Dosing (up to 30 cycles)**
- **60+ Series adds:**
- **18 Place Settings**
- **10 Spray Zones** including 2 adjustable PowerZones™
- Exclusive **4-level** Flexirack™ system with height-adjustable upper rack
- **UV Cleanse mode**

Features in bold type represent upgrades in this series.

Sabbath mode feature included on all models.

XL = ADA height compliant

XXL = Tallest interior tub on the market



www.milestonedist.com

ASKO | TOP SELLING FEATURES OF THE ASKO DISHWASHER

Turbo Combi Drying™ with sensor control



Combines fan-assisted drying and sensor controlled automatic door open to maximize drying to minimize moisture and shorten program time.

World Class Loading Capacity



Our XXL dishwashers have the tallest tub in the industry with room for larger plates and taller glasses, 16-18 place settings (depending on model). This provides up to 40% more loading capacity compared to a standard dishwasher.

8 Steel™



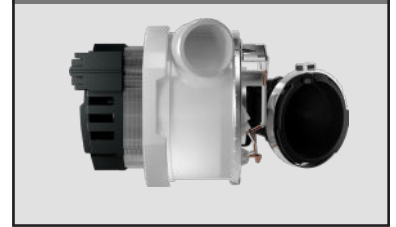
Designed to last for 20 years. No other material lasts as long as steel. This is why ASKO produces dishwashers with 8 steel™ - eight of the most important components are made of higher quality steel rather than plastic: container, spray pipe, outer base, spray arms, loading racks, feet, strainers and inner door.

10 Spray™ Zones



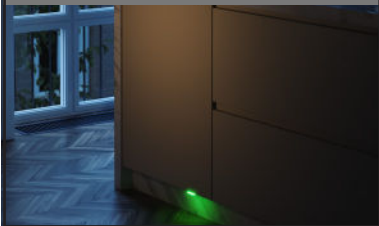
Up to 10 separate spray zones that reach every part of the machine, including 2 adjustable power zones, making sure each item gets clean.

Brushless Motors



No brushes mean fewer parts that can break and it also makes the motors quieter, down to 37dB(A) in night mode. You will get higher efficiency which results in reduced energy consumption and longer life.

Status Light™



Multi-color status light:
BLUE - The program has started.
RED - The program is in full operation and no more dishes should be added to the load.
GREEN - The program is complete and your dishes are ready to be unloaded.

4 LED Interior Lights



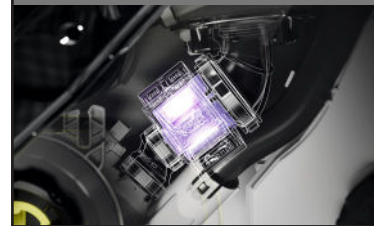
LED-based interior lights in the dishwasher create a better working environment and make it easier to get an overview of the load. The LED solution also generates better light intensity and durability.

Auto Dosing



Automatically adjusts the dosage of detergent to the soil level, water hardness and program type to an optimal level for cleaning performance with capacity for up to 30 loads before refilling.

UV Cleanse Mode



During the final rinse, the water is sanitized with UV light and heat to kill microorganisms. The result is a market-leading reduction of bacteria and other microbes. UV Cleanse mode in combination with Intensive or Sanitize programs eliminates up to 99.99999 % of bacteria, fungi and viruses.

Sliding Door Model



The sliding door solution makes tight installation, without interference between the wooden front door and kitchen cabinetry, possible. When mounted, the wooden door will slide upwards when opening and downwards when closing.

